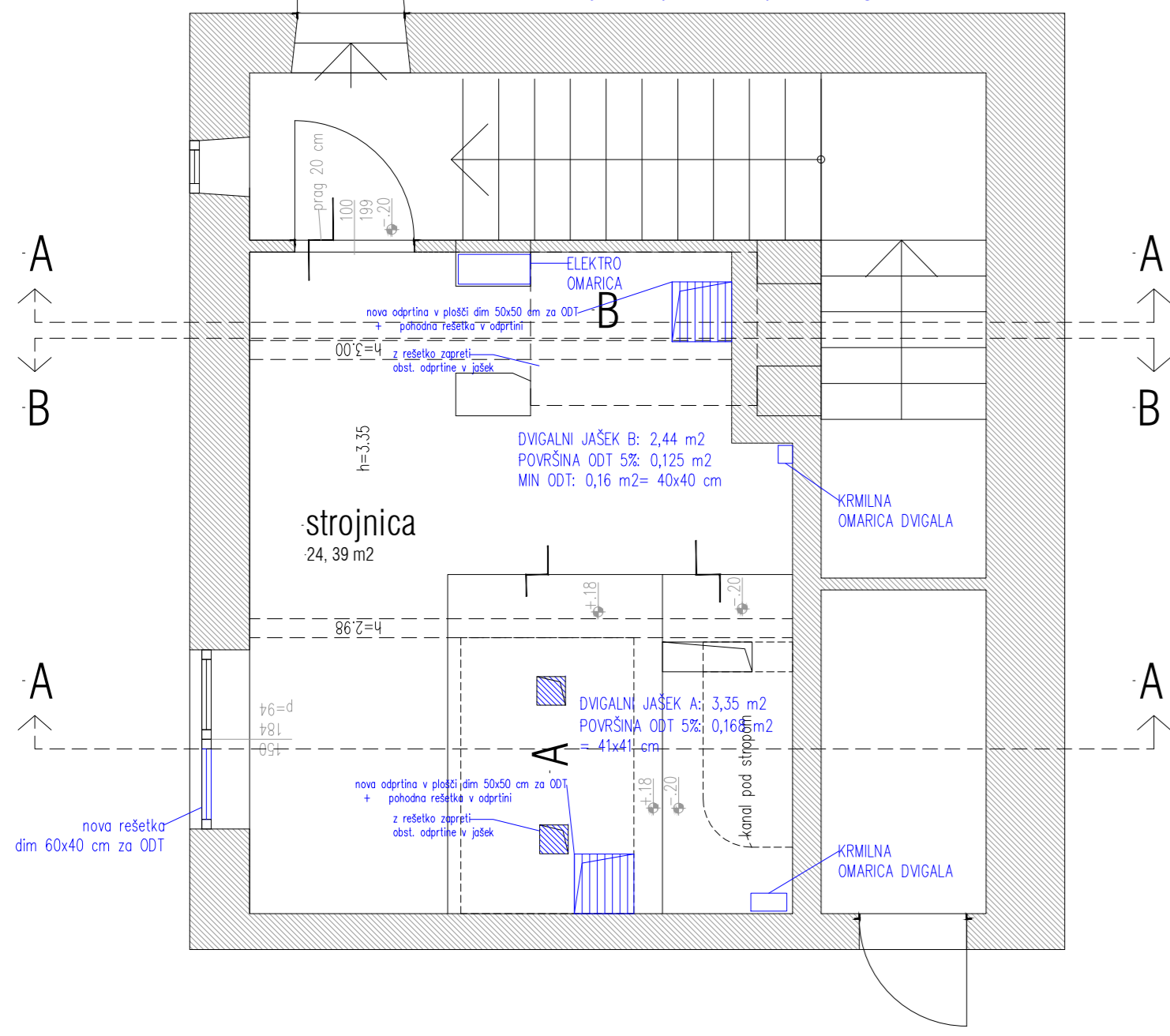
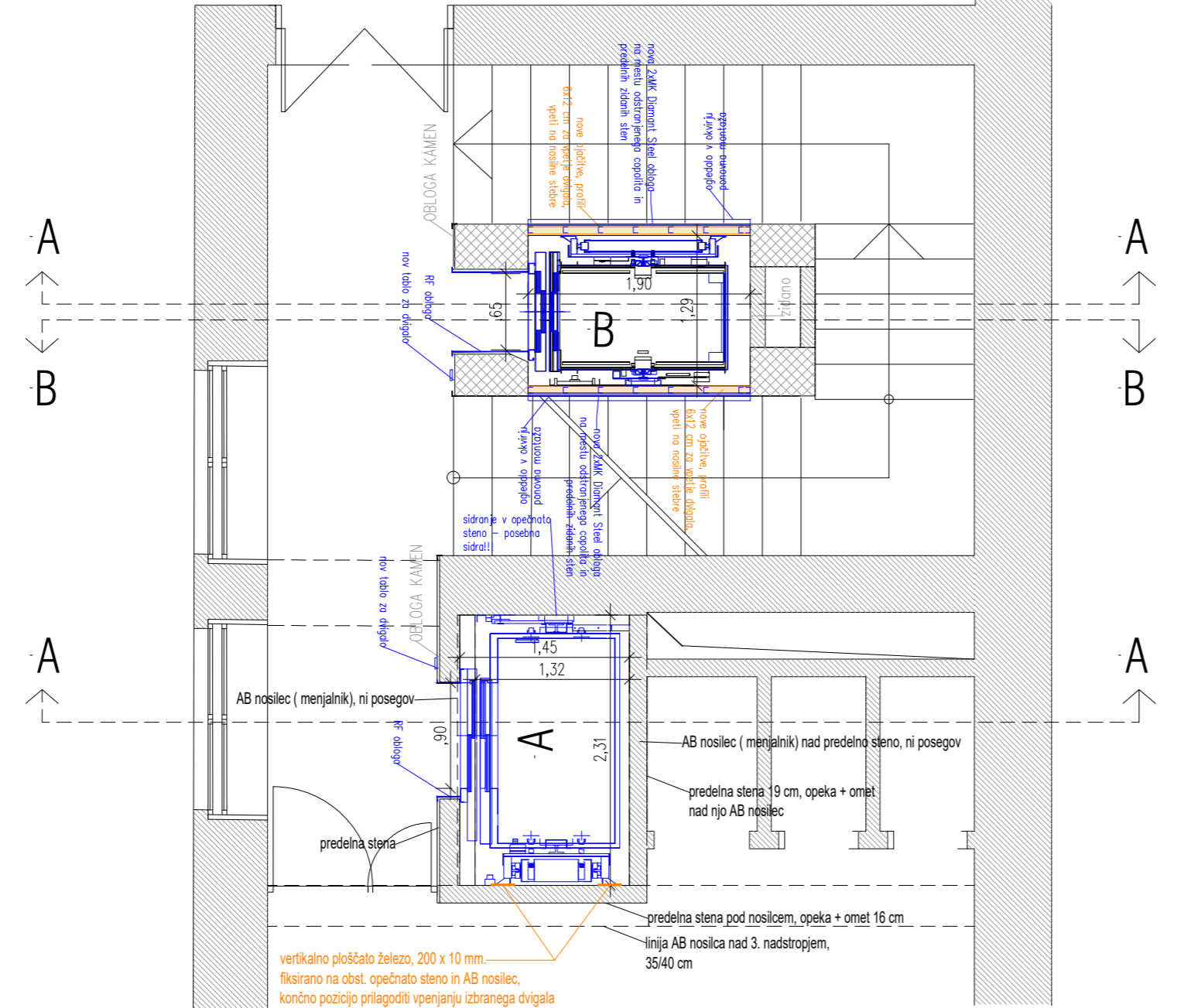


### 6 NADSTROPJE, strojnica

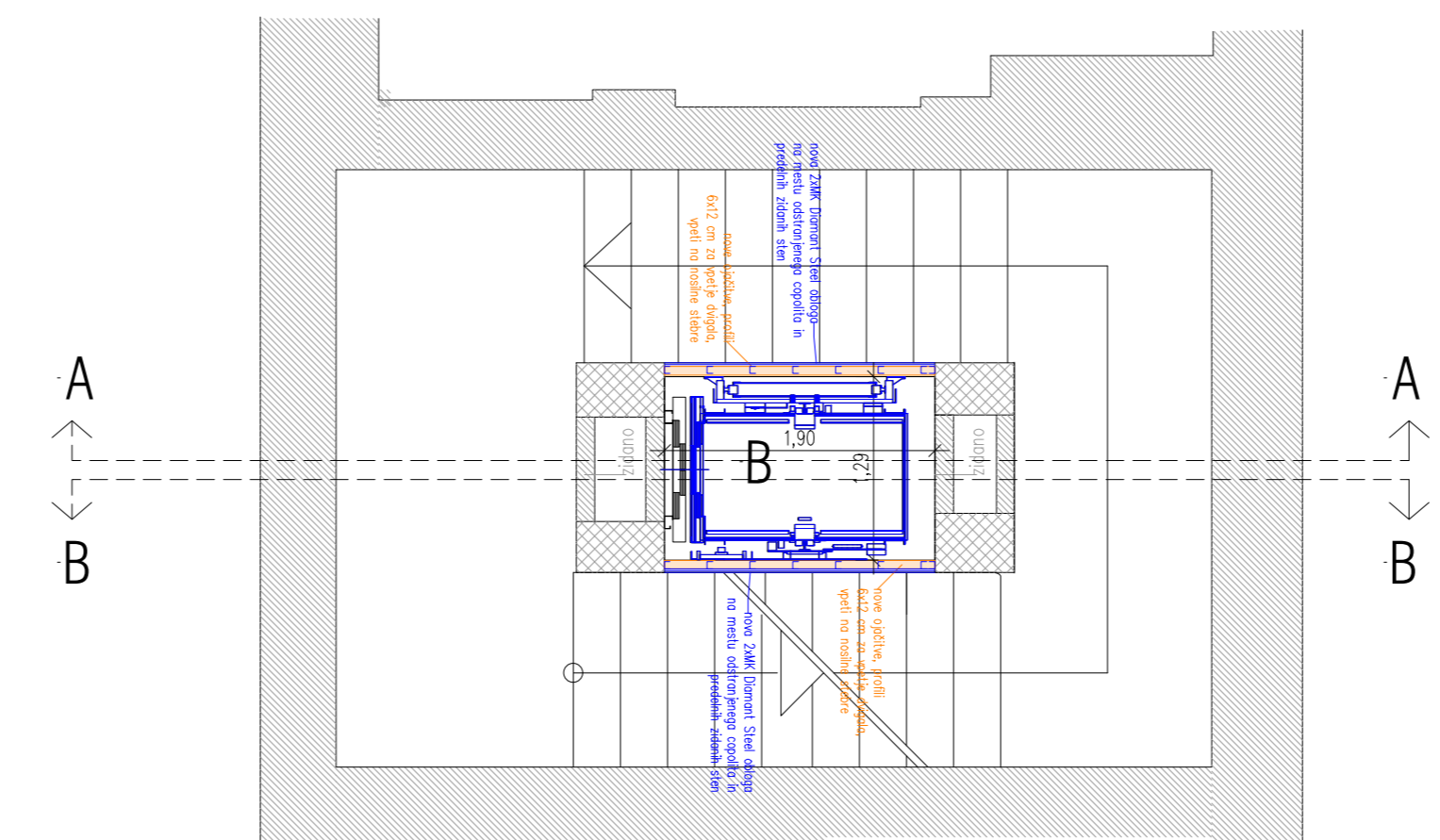
STROJNICA A IN B:  
 - sanacija sten (pleskanje in kitanje), obst. razsvetljava  
 - odstraniti obstoječo nepotrebno opremo dvigal in elektro omari



### 3 NADSTROPJE



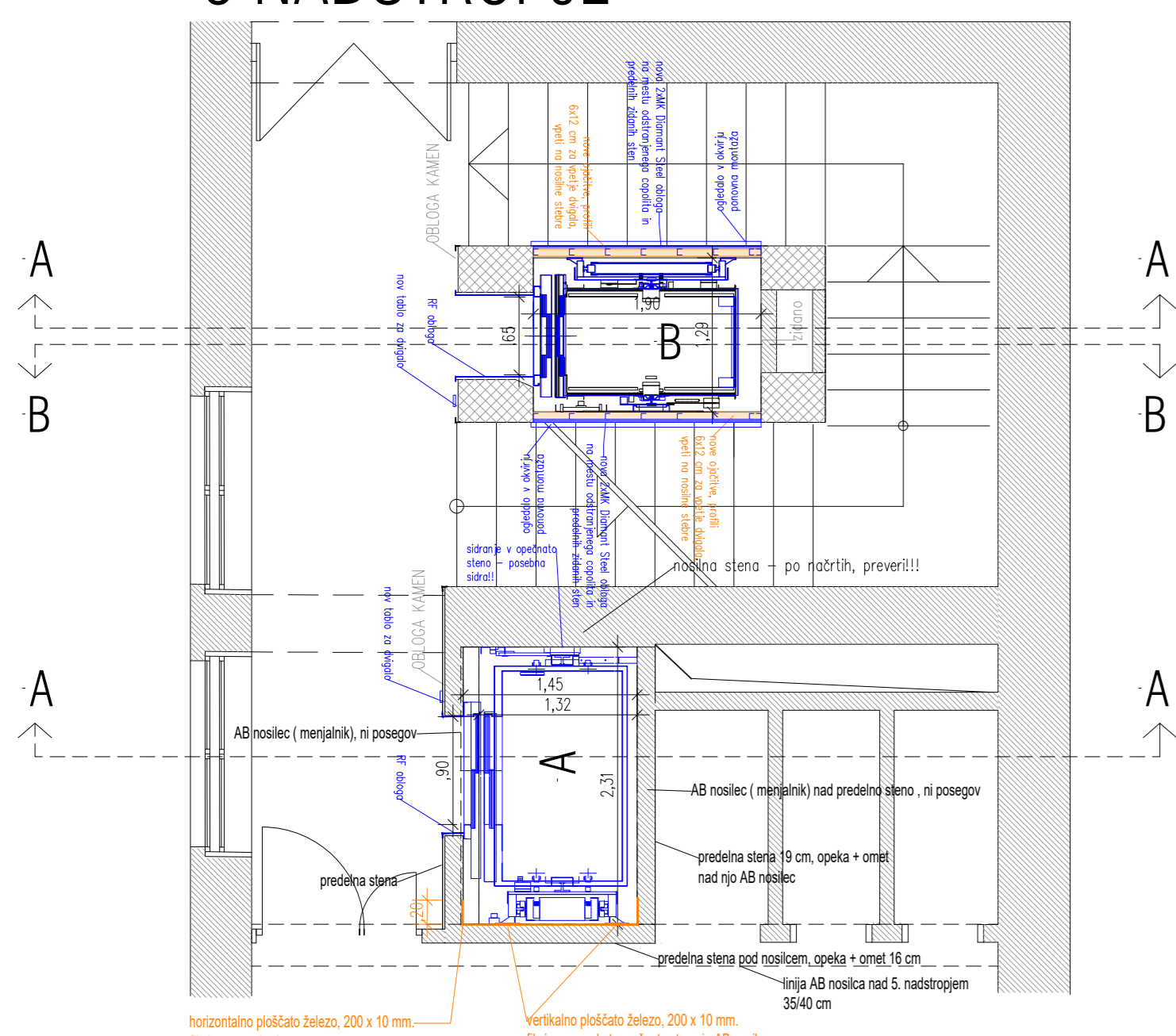
### podest



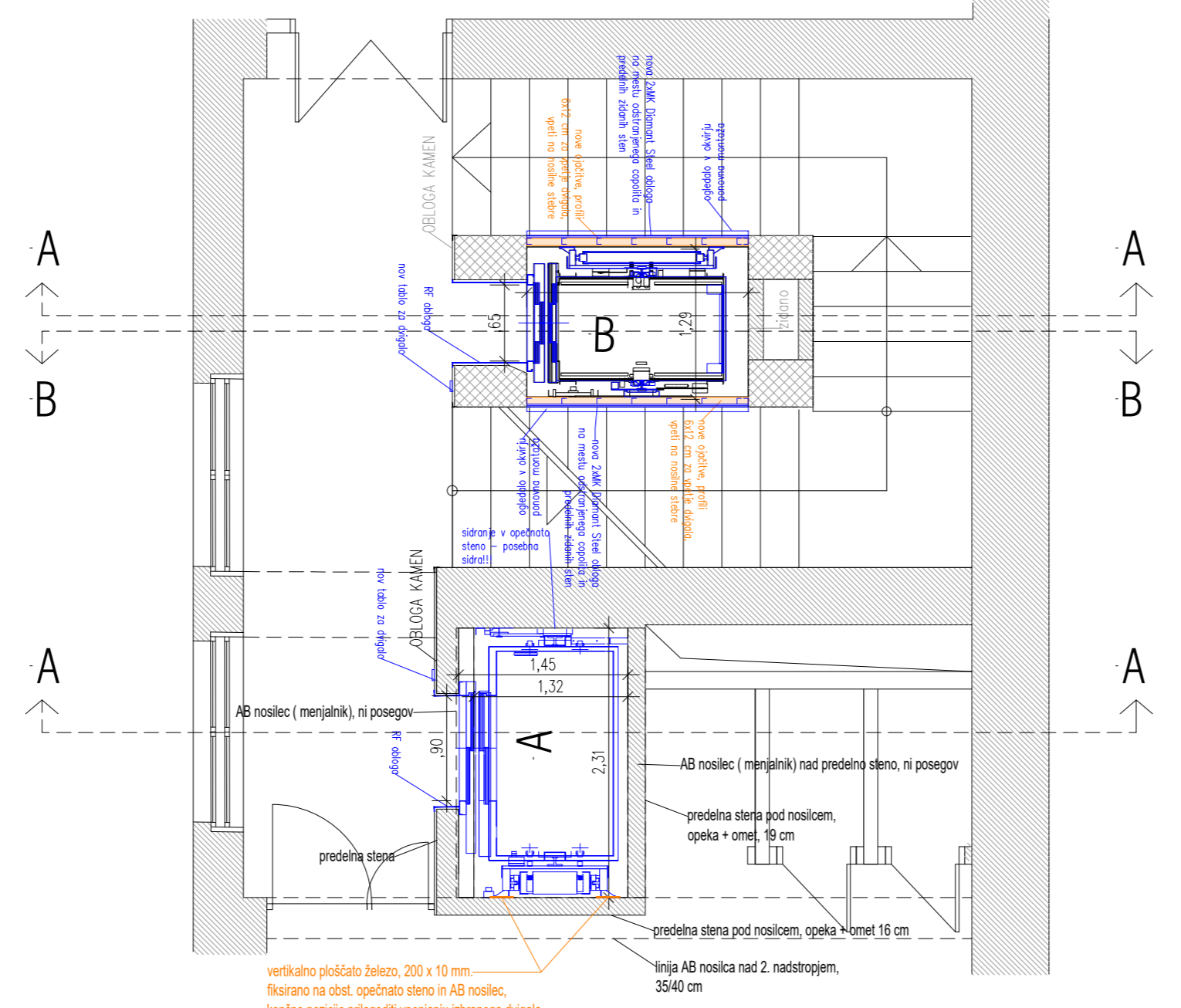
## tlorisi jaška A in B

- zidane stene
- nearmirani beton

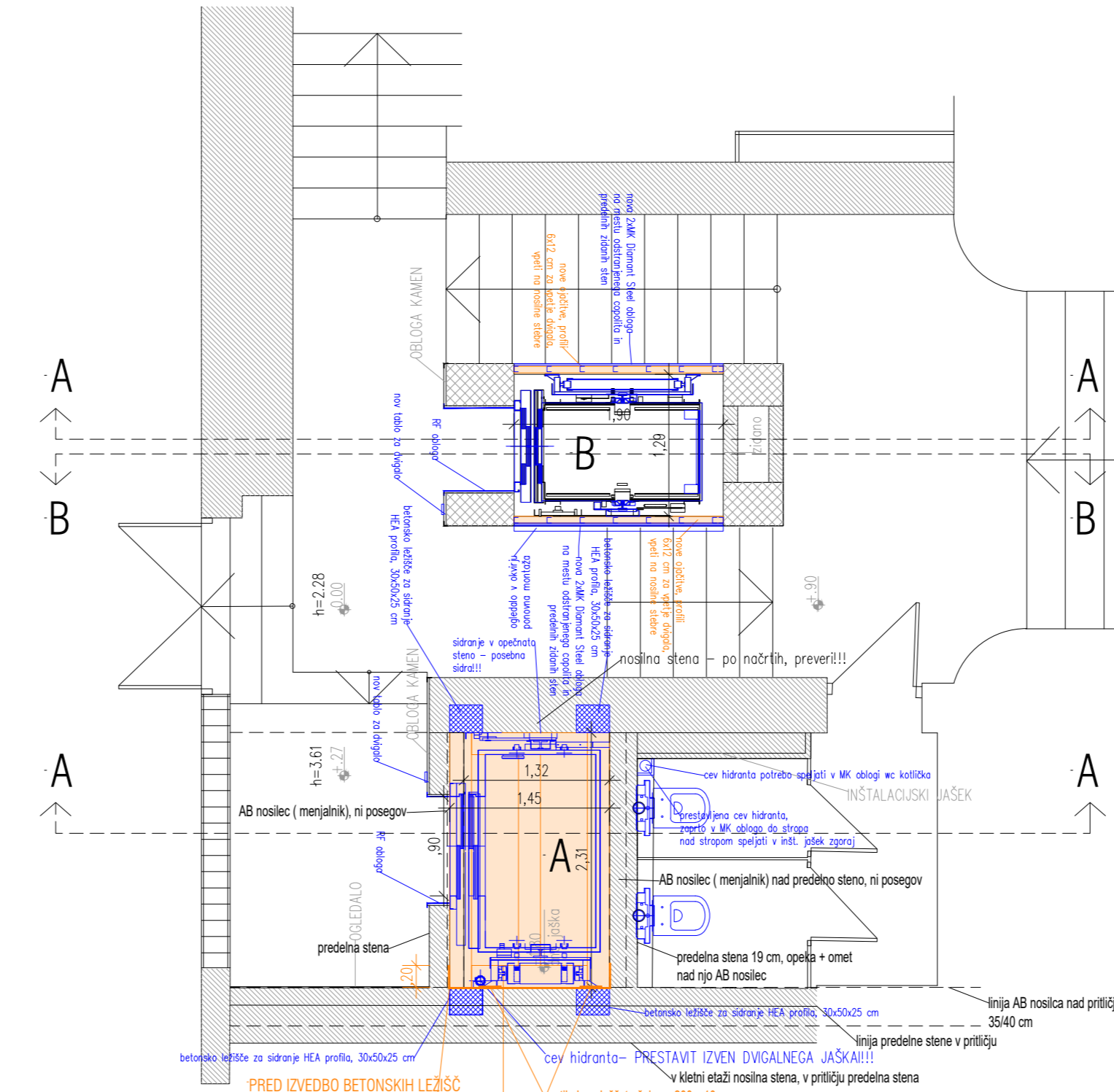
### 5 NADSTROPJE



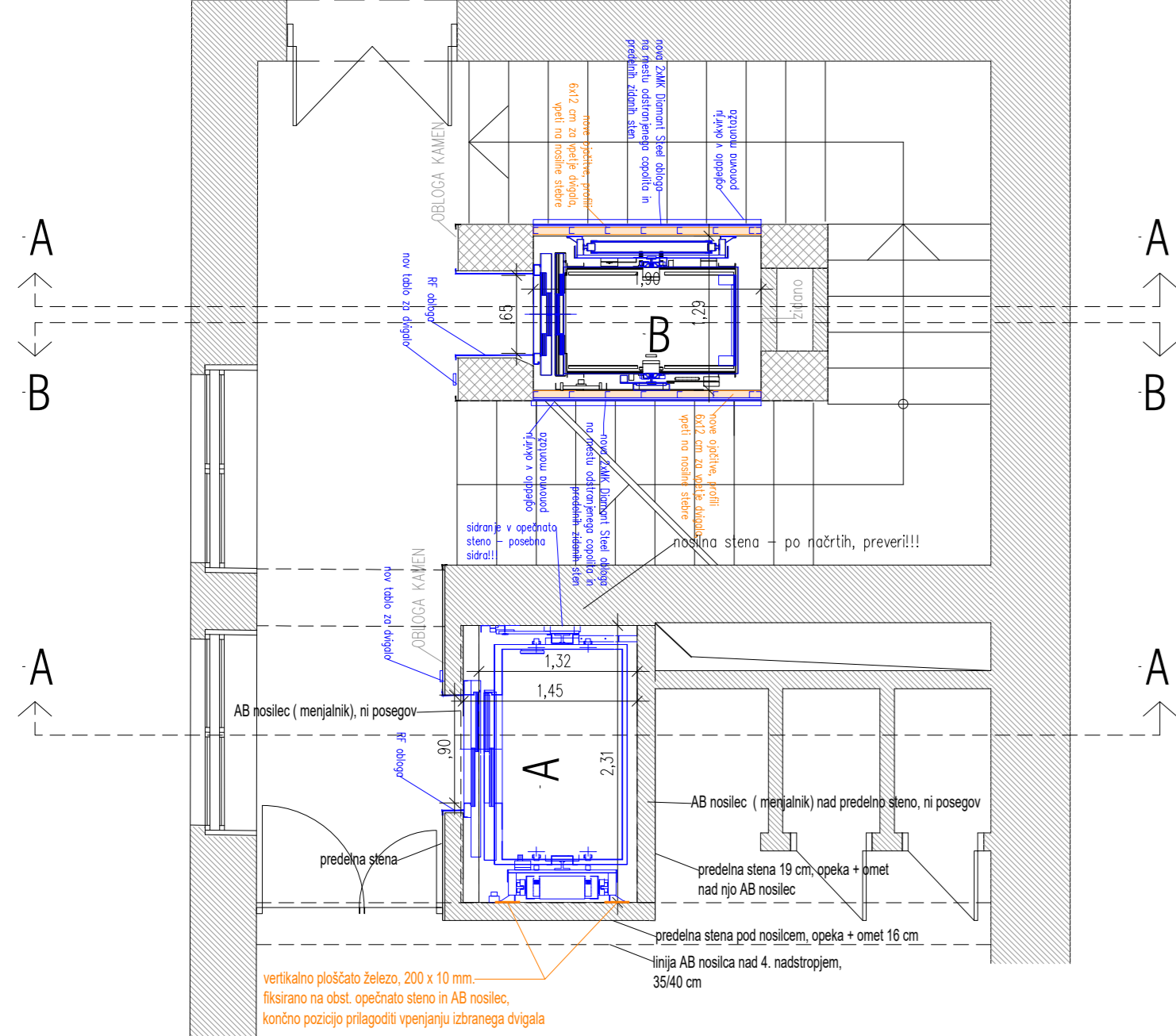
### 2 NADSTROPJE



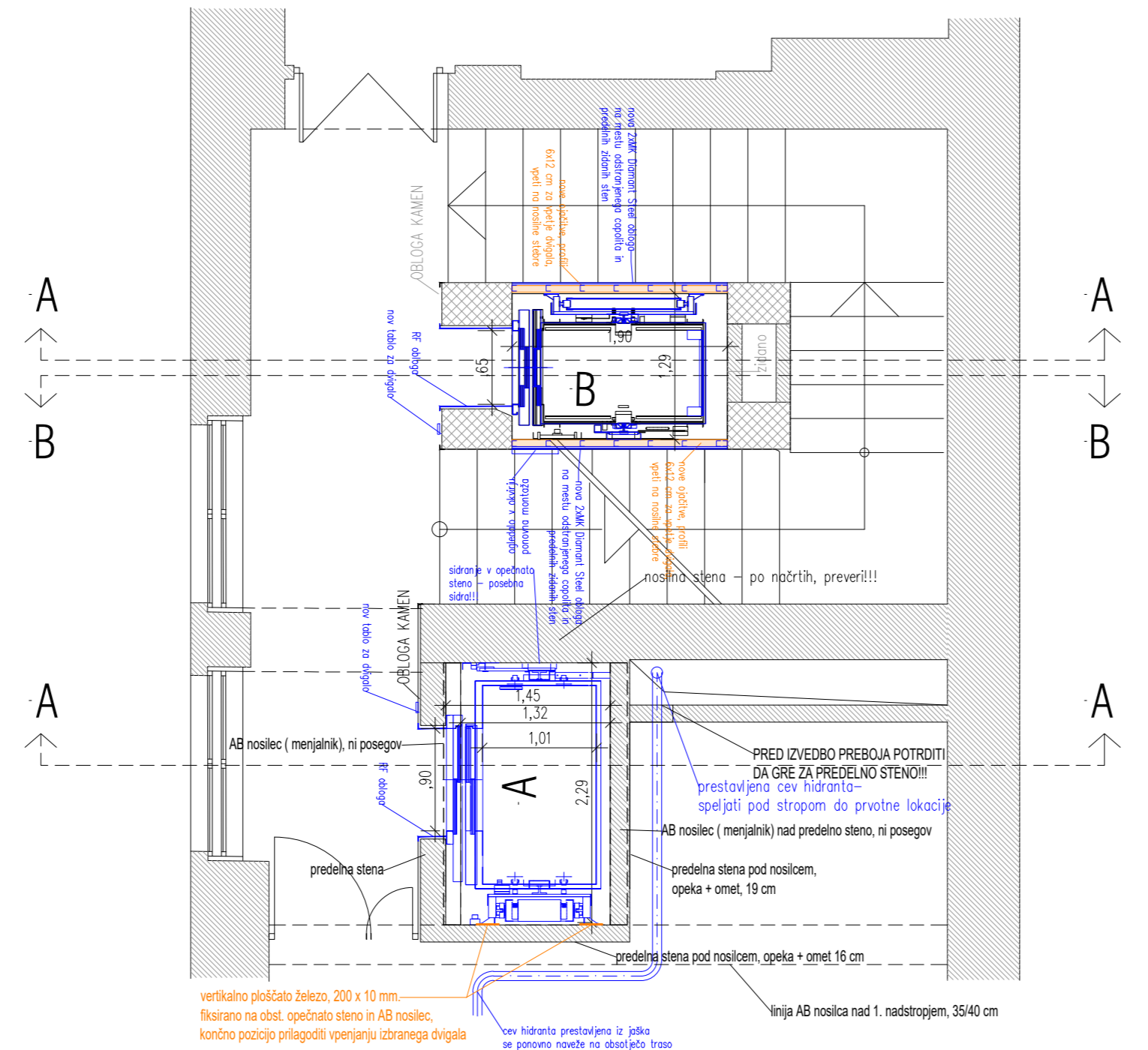
### PRITLIČJE



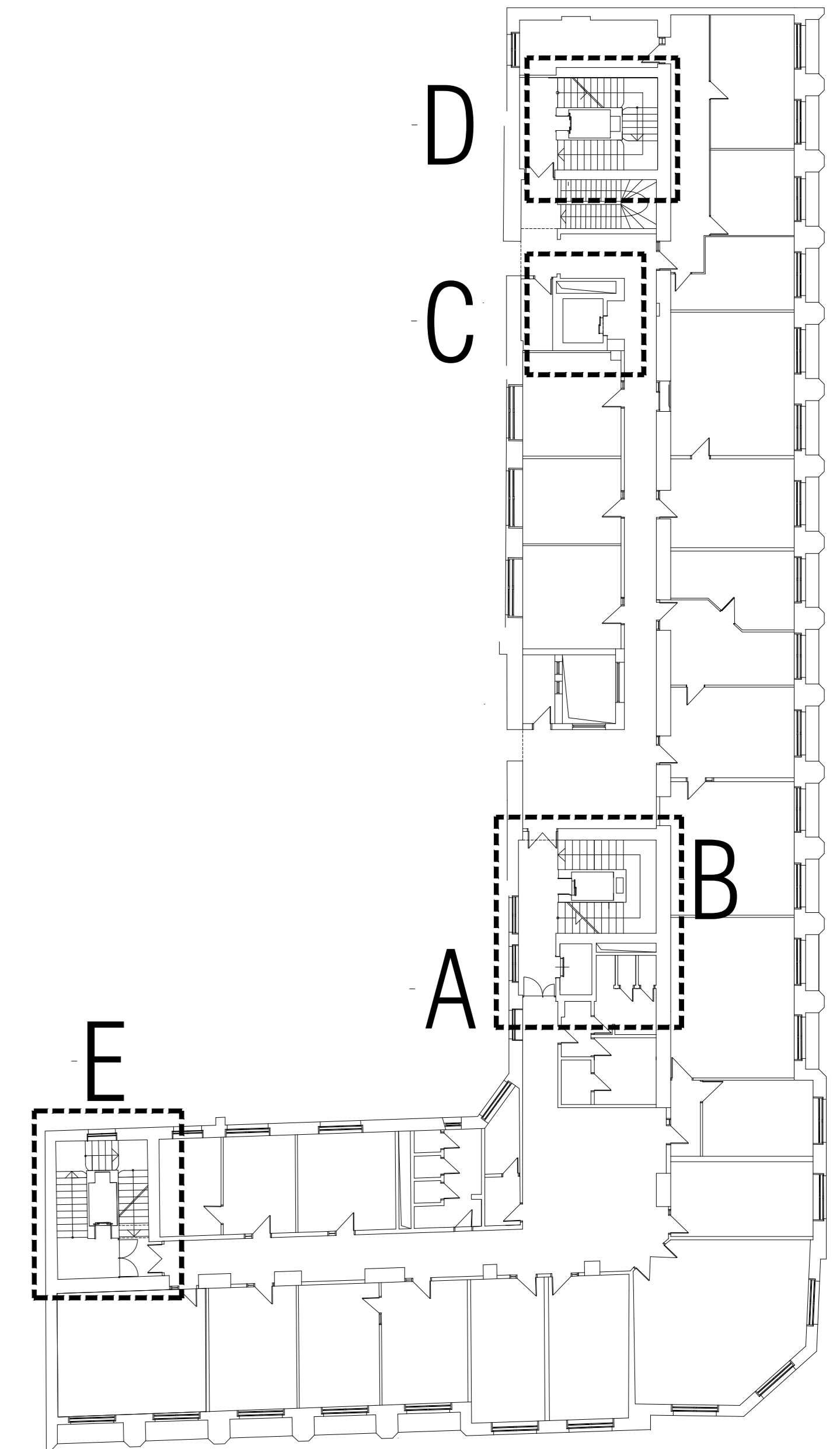
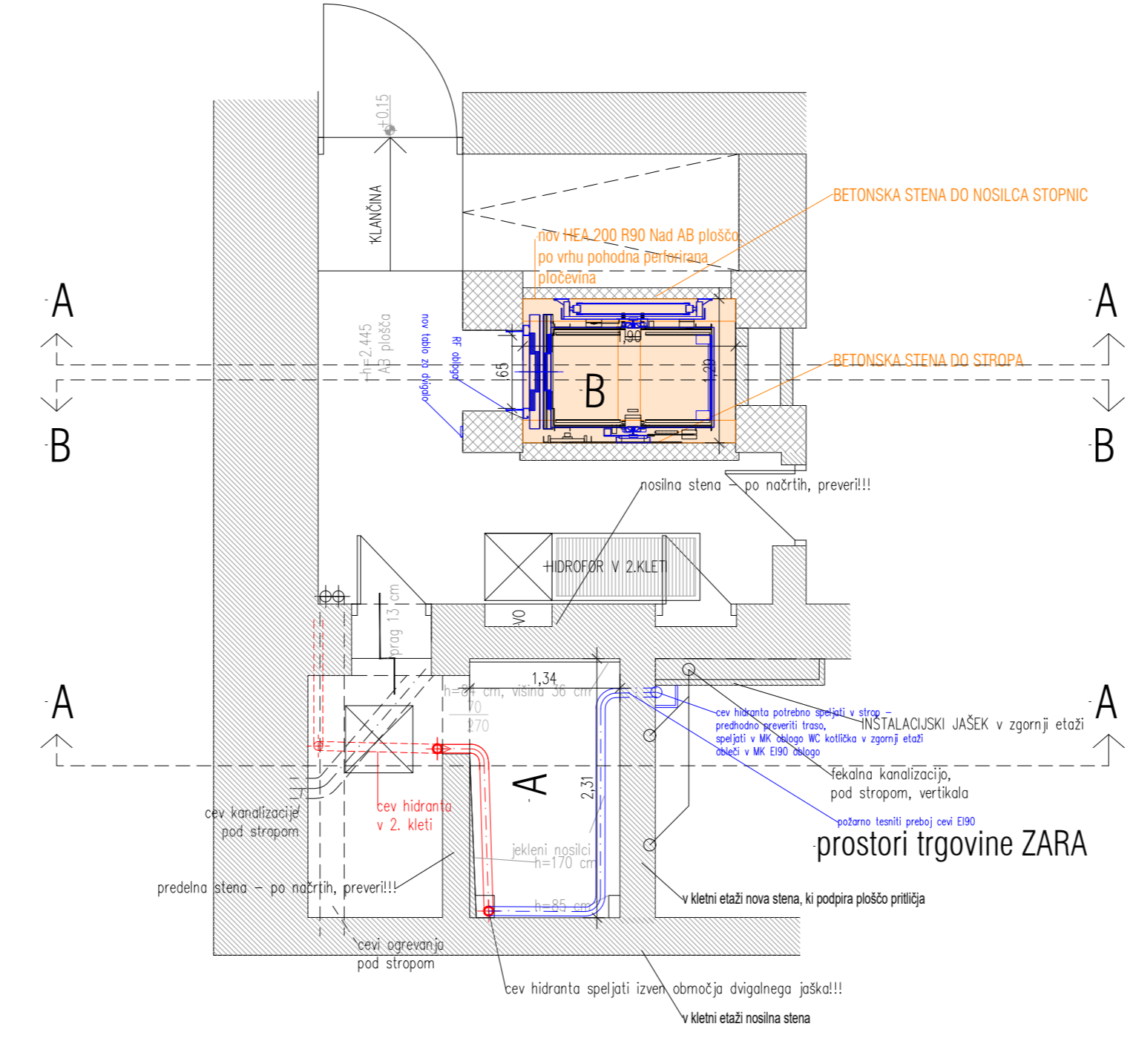
### 4 NADSTROPJE



### 1 NADSTROPJE



### 1 KLET



LEGENDA:  
 ■ NOVI ELEMENTI  
 ■ NOVI ELEMENTI S POŽARNO ZABOŠČO  
 ■ NOVI ELEMENTI  
 ■ NOVI ELEMENTI  
 ■ NOVI ELEMENTI

Banka Slovenije  
 Slovenska cesta 38, 1000 Ljubljana  
 odgovorni projektant  
 SANDOZA ŠTEPANIČ, u.d. o. s.  
 in št. ZAPIS 1116A

Banka Slovenije - Zamenjava petih  
 obstoječih vnovič dvigal  
 odgovorni projektant  
 SANDOZA ŠTEPANIČ, u.d. o. s.  
 in št. ZAPIS 1116A

NOVO  
 PREREZ, TLORIS - JASEK A IN B  
 NAČRT ARHITEKTURE

11. projekcija  
 2024-04  
 datum  
 FEBRUAR 2025

1:50  
 merilo

PZI  
 inšt.

11  
 inšt.